

■Company Name
DHOWA TECHNOS CO., LTD.

■Capital
87.15 million yen

■Established
October 26, 1948

■President
Hirokazu Ono

■Core Businesses

- ・Coordination of industrial plant electrical machinery and design facilities
- ・Factory automation proposals for production lines
- ・Design and installation of electronics, machinery, communications, and plumbing
- ・Unit sales of industrial parts, including electronics, machinery, instrumentation, communications, etc.
- ・Arranging sampling devices for materials (receiving, delivery, sample adjustment)

■Employees
188

■Address
3-5 Kurosaki Shiroishi, Yahatanishi-ku, Kitakyushu City, Fukuoka 806-0004

Inquiry

URL: <https://www.dhowa-technos.co.jp/en/>
Email: os-info@dhowa-technos.co.jp
Tel: +81-93-621-4136

DHOWA TECHNOS
WEB SITE



① DHOWA TECHNOS CO., LTD.

International Business Department

3-5 Kurosaki Shiroishi, Yahata Nishi-ku, Kitakyushu-shi, Fukuoka Japan 806-0004
TEL +81-93-621-4136 FAX +81-93-621-4168

② DHOWA TECHNOS Rus LLC

Russian Federation, Sverdlovsk region, 620075, Ekaterinburg city,
Malysheva str 51, 4th floor, off 4/05
TEL +7(343)926-41-31

③ DHOWA TECHNOS (THAILAND) CO.,LTD.

34 Soi Bangna-Trad 34, Debaratna Road, Bangna Tai Sub-District,
Bangna District BANGKOK 10260
TEL +66-(0)2-541-5410-12 FAX +66-(0)2-541-5413

④ Head Office / Kyushu Office

(Kitakyushu Sales Department)

FA System Department

3-5 Kurosaki Shiroishi, Yahatanishi-ku, Kitakyushu City, Fukuoka 806-0004

⑤ Tokyo Office

Nanwanihonbashi Bldg.5F,4-2-16 Nihonbashimuromachi, Chuo-ku,
Tokyo, 103-0022

⑥ Chiba Office

IMI Bldg. 4F, 2-15-11, Fujimi, Chuo-ku Chiba-shi, Chiba, 260-0015

⑦ Osaka Office

Shin-Osaka Prime Tower 13F, 6-1-1 Nishinakajima, Yodogawa-ku,
Osaka City, Osaka 532-0011

Plus 14 other offices in Japan

DHOWA TECHNOS GROUP

EIM CONTROL SYSTEMS CO.,LTD.



■Main Products and Services

- ・Design, manufacture, and installation of control/instrumentation device electronic parts
- ・Automatic control boards
- ・High/low voltage wiring boards
- ・Instrumentation boards
- ・Lighting control boards
- ・Factory automation/mechatronics control devices

■Employees: 50

■Address
3-5 Kurosaki Shiroishi, Yahata Nishi-ku, Kitakyushu-shi, Fukuoka Japan
TEL +81-(0)93-622-4131
FAX +81-(0)93-621-4137
■URL <http://www.eimss.co.jp/>

EIM ELECTRIC CO.,LTD. Overseas Department



■Main Products and Services

- ・Various underwater pumps
- ・Water/liquid processing systems equipment
- ・Magnet applications equipment
- ・Electronics-related equipment

■Employees: 110

■Address
10-2-16, Inokuma 10-Chome, Mizumaki, Onga, Fukuoka, 807-0001 JAPAN
TEL +81-(0)93-202-4147
FAX +81-(0)93-202-1288

- ・Overseas branches
- HongKong, Vietnam

■URL <http://www.eimpump.co.jp/>

mYé systems Corporation



■Main Businesses
Development, manufacture, and control of various factory automation machines, such as industrial robots

■Employees: 5

■Address
2006-9 Miwa,Hikari-shi,Yamaguchi, 743-0102,Japan

■URL <http://www.myesystems.co.jp/>

Cpex CO.,LTD.



■Main Businesses
Design and fabrication of furnace covers for coke ovens, supply of maintenance parts related to furnace covers, and development of new furnace covers.

■Address
3-5 Kurosaki Shiroishi, Yahata Nishi-ku, Kitakyushu-shi, Fukuoka Japan
(Within DHOWA TECHNOS CO., LTD.)

Corporate Profile

Proposals and solutions beyond what trading companies offer. We help build the future for companies and manufacturing.

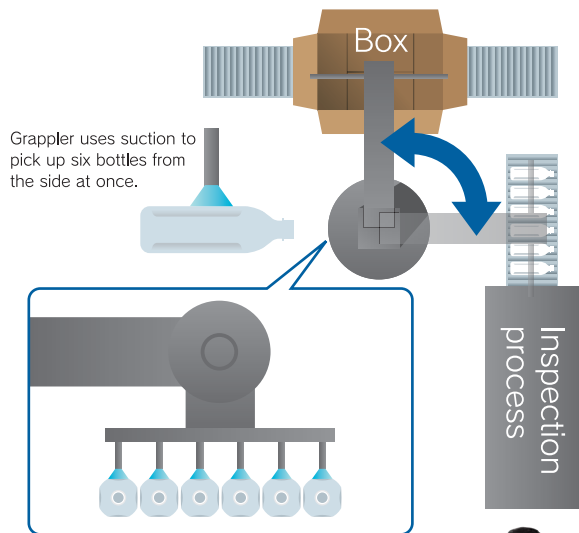
We handle parts from over 500 manufacturers of industrial electronic equipment.
We do more than just propose products for your location. As a best solutions partner, we solve issues and problems directly related to operations, such as quality, cost, and delivery, and provide total support from planning and design to installation and maintenance.



? We want to automate the boxing of inspected bottles.

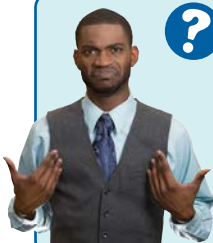
All our processes from forming to inspection are automated, but we still pack the bottles manually. We want to reduce the workforce burden and automate all processes.

We introduced a grappler that could pick up six inspected bottles at once!



! We saved on labor and boosted productivity!

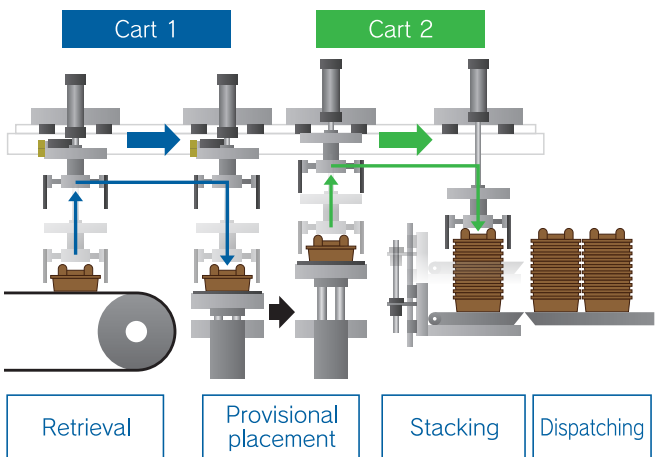
We are thinking of investing the manpower savings in new facilities.



? We want to automate work in high-temperature, high-humidity environments.

Currently, pulp molds that come from the drying ovens are stacked by hand. This is tough work for employees in high-temperature, high-humidity environments, so we want to automate the task.

We introduced two servo drive carts with handling functions!



! Retrieval, arranging, and stacking of pulp molds is now fully automated!

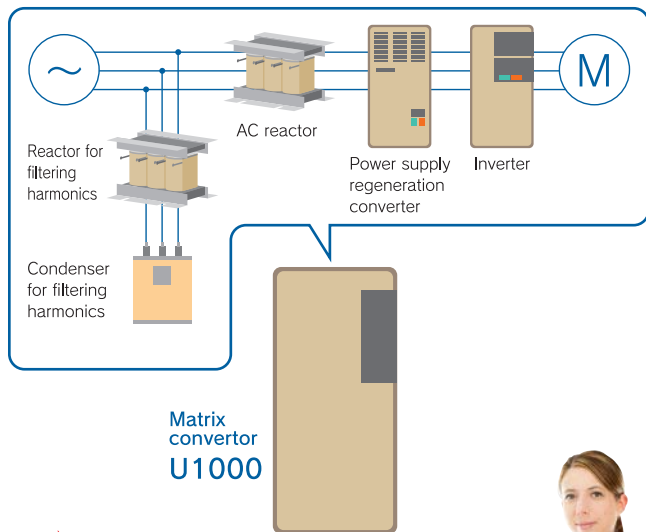
We let machines do the work in poor environments.



? We want to reduce the cost of crane variable speed control, but have limited space for control board installation.

In order to reduce the cost of crane facilities, we want to switch in control boards that meet harmonic suppression countermeasure guidelines. However, installation space is limited.

We introduced a matrix convertor!



! By reducing energy use and size and eliminating harmonics, we have dramatically cut costs while operating in a limited space!

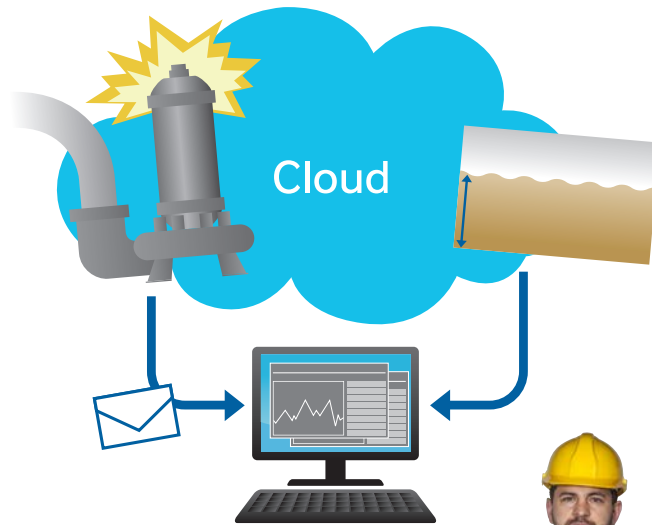
Simply, easy-to-use equipment solved the problem without expanding the plant.



? We are updating our pumping facilities, and so are looking for proposals to make operations easier and smoother.

Our pumping station facilities have been in use for over 30 years. We do not have any concrete ideas for the upgrade, but we do want a more functional and effective operating environment.

We put the pump station systems on the cloud!



! By putting systems on the cloud, we can monitor pump malfunctions and water level changes on-screen!

We can check all the town's pumps without going to the actual stations.

Factory automation planner developed in Japan to meet manufacturer's increasingly sophisticated and diverse needs.

Supported by four business pillars, we provide high-quality products and services for manufacturing plants in a wide range of industries, for private companies and governments.

As well, we collaborate with partner companies and proactively engage in everything from component supply to the coordination of systems and plants in order to promote factory automation and manpower savings.

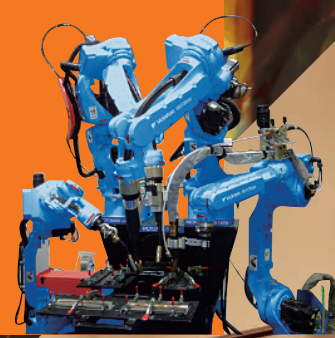
We handle hundreds of products, all produced without compromise using proven Japanese technology.

We can select the optimal equipment, create combinations of products, and even provide fine-tuned responses to unique customization requests.

In every case, we deliver the best proposals to our customers.

Factory Automation system

We concentrate on manpower savings through the use of robots, and focus on the electrical machinery market to help expand automation in a range of factory processes, including welding, painting, handling, conveying, and more. We design systems in-house to deliver optimal solutions to our customers.



Plant engineering for factory

From steel works to chemical plants and more, we support the stable running of plant systems that provide comfortable lifestyles for everyone. Acting as a one-stop solutions shop for our customer's factories, we present innovative solutions that precisely meet their requirements.



System engineering for public

Beginning with solar power generation systems and water and sewage systems, we contribute to public works and infrastructure projects. We are known not just for our products, but for the post-installation maintenance and support systems we provide. We have earned the comprehensive trust of many government agencies.



Electrical equipment & Information technology

We offer unit sales not only of electrical machinery, instrumentation, and tool products used in plant and public works systems, but also materials required by industry. From office equipment sales to construction, we can respond to customer needs in a wide range of fields.



PRODUCTS

Plant engineering for factories

Industrial motors

- YASKAWA Electric Corporation/Variable speed drives, small/medium/large electric motors, electric motors for ships, power generators, and more
- YASKAWA MOTOR CORPORATION/Variable speed drives, small/medium/large electric motors, synchronous power generators
- Yaskawa Siemens Automation & Drives Corp./Small/medium electric motors, Siemens-built electric motors
- YAWATA ELECTRIC MACHINERY MFG. CO., LTD./Variable speed electric motors (without slip rings), AC motors, DC machines
- Moog Animatics/Servo motors with built-in controllers, servo systems
- NIDEC TECHNO MOTOR CORPORATION/Small/medium electric motors, applied equipment
- APEX DYNAMICS INC.,JAPAN/Reducers for servo motors
- Sumitomo Heavy Industries, Ltd./Transmission and reduction gears for electric motors, gear motors
- NISSEI CORPORATION/Transmission and reduction gears, gear motors
- TAC GIKEN INDUSTRIES,INC./Spindle motors

Electric control equipment (drives)/HMI

- YASKAWA Electric Corporation/Low-voltage/high-voltage inverters, PLC, servo amps, controllers
- YASKAWA CONTROLS CO., LTD/Limit switches, control equipment, sensors, various switches
- Digital Electronics Corporation/Graphics control panels, panel computers, revolving lights/speech synthesis equipment
- Yokogawa Electric Corporation/PLC
- Nishitei Co.,Ltd./Resistors
- SAKAMOTO ELECTRIC MFG. CO., LTD./Various switches and parts
- TERASAKI ELECTRIC CO.,LTD/Breakers
- DAIHEN Corporation/Transformers and substation facilities
- AIHARA ELECTRIC CO.,LTD/Transformers

Power source devices

- TDK-Lambda Corporation/Switching power sources/UPS
- Sanken Electric Co., Ltd./Uninterruptible power supply devices
- GS Yuasa Corporation/Various batteries, power source systems
- The Furukawa Battery CO., LTD./Various storage batteries, DC power source boards

Maintenance, upkeep, and related services

- KYOSAI TECHNOS CO.,LTD./Repair/redesign of electrical products beyond manufacturer's warranty period
- YASKAWA ELECTRIC ENGINEERING CORPORATION/Factory automation testing and adjusting, design and manufacture, maintenance, repair, renewal
- Yaskawa Siemens Automation & Drives Corp./Maintenance, preventive upkeep, insulation diagnosis
- Kuwahara Electric Corporation/High-voltage motor coil rewinding, coil repair, coil maintenance, coil life diagnosis
- ALL-TEST Pro,LLC/Motor diagnosis devices

System engineering for public

Power generators

- YANMAR CO., LTD./Diesel generators, gas generators
- Mitsubishi Heavy Industries, Ltd./Diesel generators, cogeneration systems

Systems for plumbing and sewage works, various infrastructure facilities

- EIM ELECTRIC CO., LTD./Submersible pumps, water/liquid processing systems
- EBARA CORPORATION/Various land pumps
- Yokota Manufacturing Co., Ltd./Hydraulic equipment for valves, pumps
- Mitsubishi Heavy Industries, Ltd./Various land pumps
- Suido Kiko Kaisha, Ltd./Wastewater processing facilities
- KAWAMOTO PUMP MFG.CO.,LTD./Various pumps
- Toyo Denki Industrial Co.,Ltd./Pumps/submersible machinery

APPLICATIONS

All pictures are simulated.



Steel processing line



Fans and pumps



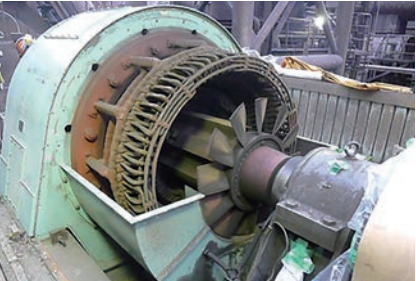
Palletizing



Herls Robotics Labelling System



CPEX Blue Sky coke oven doors



Motor Maintenance

Factory automation systems

FA Systems / Robot Systems

- YASKAWA Electric Corporation/Robot systems (automobile welding lines, liquid crystal conveyor devices, others), products related to semiconductor wafer conveyor robots (power distribution systems, steel plant systems)
- Yaskawa Siemens Automation & Drives Corp./Electrical products for installed facilities, factory automation systems (paper pulp processing lines, port cargo handling systems, others)
- mYesystems Corporation/Development, manufacture, and control of various factory automation machines, such as industrial robots
- Seiko Epson Corporation/SCARA robots

Machinery

- SENSHU ELECTRIC CO.,LTD./Electrical wiring/cables, connectors/harnesses/terminal treatment materials
- Bando Chemical Industries, Ltd./Synchro belts/pulleys/vibration damping rubber
- Seibu Electric & Machinery Co.,Ltd./Vertical automated warehouses, valve control
- Nikkei Seigyo Kiki Co., Ltd./Winders
- Nippon Magnetics, Inc./Electromagnetic pulleys, magnetic separators
- SQUSE Co., Ltd. /Air compressors, robot systems, actuators
- eWon Co., Ltd./Remote connection routers for industrial use
- CPEX Co., Ltd./Design and manufacture of furnace covers for coke ovens

Instrumentation-related products

- CHIKUSHI ELECTRIC COMPANY/Electrical volume demand monitoring devices
- NOHKEN Inc./Level switches/float switches
- FELLOW KOGYO CO., LTD./Level meters (electrostatic capacity, ultrasonic waves)
- Minebea Co., Ltd./Load cells, measuring equipment
- KANSAI Automation Co., Ltd./Level meters (paddle types, others)
- Matsushima Measure Tech Co., Ltd./Level meters (ultrasonic waves, microwaves), float switches, conveyor hold devices, environmental equipment
- Emerson Japan, Ltd./Fluid level meters/level meters
- TOKYO KEIKI INC./Fluid control equipment
- JFE Advantech Co., Ltd./Measuring instruments, water level meters
- Isuzu Glass Ltd./Testing devices for lighting fixtures

[Control board related]

- E.I.M. Control Systems Co.,Ltd. /Control/instrumentation devices
- M-System Co.,Ltd./Instrumentation devices/equipment, various converters
- KURODA Pneumatics Ltd./Wire-saving equipment, factory automation equipment
- WAGO Company of Japan,Ltd./Wire-saving systems
- Anywire Corporation/Wire-saving equipment, multiplex transmission equipment

[Vibrators/agitators for particulates]

- URAS TECHNO CO., LTD./Uras vibrators, Various agitator/particulate handling equipment
- Various devices (pulverization, grade/sieving separation, feeding, conveyance, weighing, injecting)

[ITV Systems]

- Hibino datacom Co.,Ltd./ITV cameras, wireless image transmission systems

Electrical equipment & information technology

Office equipment

- Seiko Epson Corporation/Printers, projectors, personal computers
- BROTHER INDUSTRIES, LTD./Printers, multifunction copiers
- IRISOHYAMA INC./LED lighting fixtures
- Sharp Corporation/Ion generators, liquid crystal monitors
- NEC Corporation/Personal computers
- DAIKIN INDUSTRIES,LTD/Heating-cooling equipment, freezing equipment

Kitchen equipment

- Ultra-Fast Freezing Machine, Sodium removal machine (health care)