

ENGINEERING GROUP PRESENTATION



D H O W A T E C H N O S C O . , L T D .

Company profile



■ Company profile	
Company name	DHOWA TECHNOS CO., LTD.
Established	26-Oct-48
Capital	87.15 million yen
Annual Sales	¥13.2 billion
Employees	164
Business description	Planning, designing, manufacturing, installation work, and trial run of sampling systems, plant transportation systems.
Organization	See Page 3-4
■ Product items	
	Factory automations Energy saving and Industrial Automation and machinery Sampling systems
■ Delivery records	
Domestic power companies	See Page 18-20
Overseas	Philippine
■ Design capacity	
Structure	We have 20 highly-skilled engineers. (Plus 20 engineers from another companies related to our engineering department) See Page 3-4
■ Production capacity of our plant	
Area	15,244 m ²
Qualified people	Yes
■ After-sales service	
Parts holding period : 10 years	Production drawings retention period : 10 years (Parts retention : No)
Technical personnel dispatching in times of trouble.	Our quality control department handle sincerely and promptly.
Parts manufacturing in short time	In case of an emergency, we will be glad to support our customers immediately.
■ Main subcontract items	Castings, motors, sensors and main control parts
■ Technological alliances with domestic companies	

DHOWA TECHNOS CO., LTD.

- Core business Sales of industrial electrical machinery, control devices, system electrical equipment and robotic systems.
- Annual Sales ¥13.2billion
- Employees 164

- 3-5 Kurosaki Shiroishi, Yahata Nishi-ku, Kitakyushu-shi, Fukuoka 806-0004, Japan TEL +81-(0)93-621-4131 FAX +81-(0)93-621-4130



EIM CONTROL SYSTEMS CO., LTD.

- Core business Design, manufacturing, and installation of control/instrumentation device electronic parts.
- Production capacity ¥100 million per month
- Employees 50 (Including 26 technical staff)

- 3-5 Kurosaki Shiroishi, Yahata Nishi-ku, Kitakyushu-shi, Fukuoka 806-0004, Japan TEL +81-(0)93-622-4131 FAX +81-(0)93-621-4137



EIM ELECTRIC CO., LTD.

- Core business Various submersible pumps, Water/liquid processing systems equipment. Magnet applications equipment, Electronics-related equipment.
- Annual Sales ¥2.5billion ● ISO 9001
- Employees 120

- 10-2-16, Inokuma 10-Chome, Mizumaki, Onga, Fukuoka, 807-0001 Japan TEL +81-(0)93-202-4147 FAX +81-(0)93-202-1288



DHOWA • EIM GROUP OVERVIEW



EIM CONTROL SYSTEMS CO., LTD.

FA System department

Engineering group

- Technical team
- Sampling technology team
- Electrical components team

Robot group



DHOWA TECHNOS CO., LTD.

m Yesystems
Corporation

Our branch and sales offices

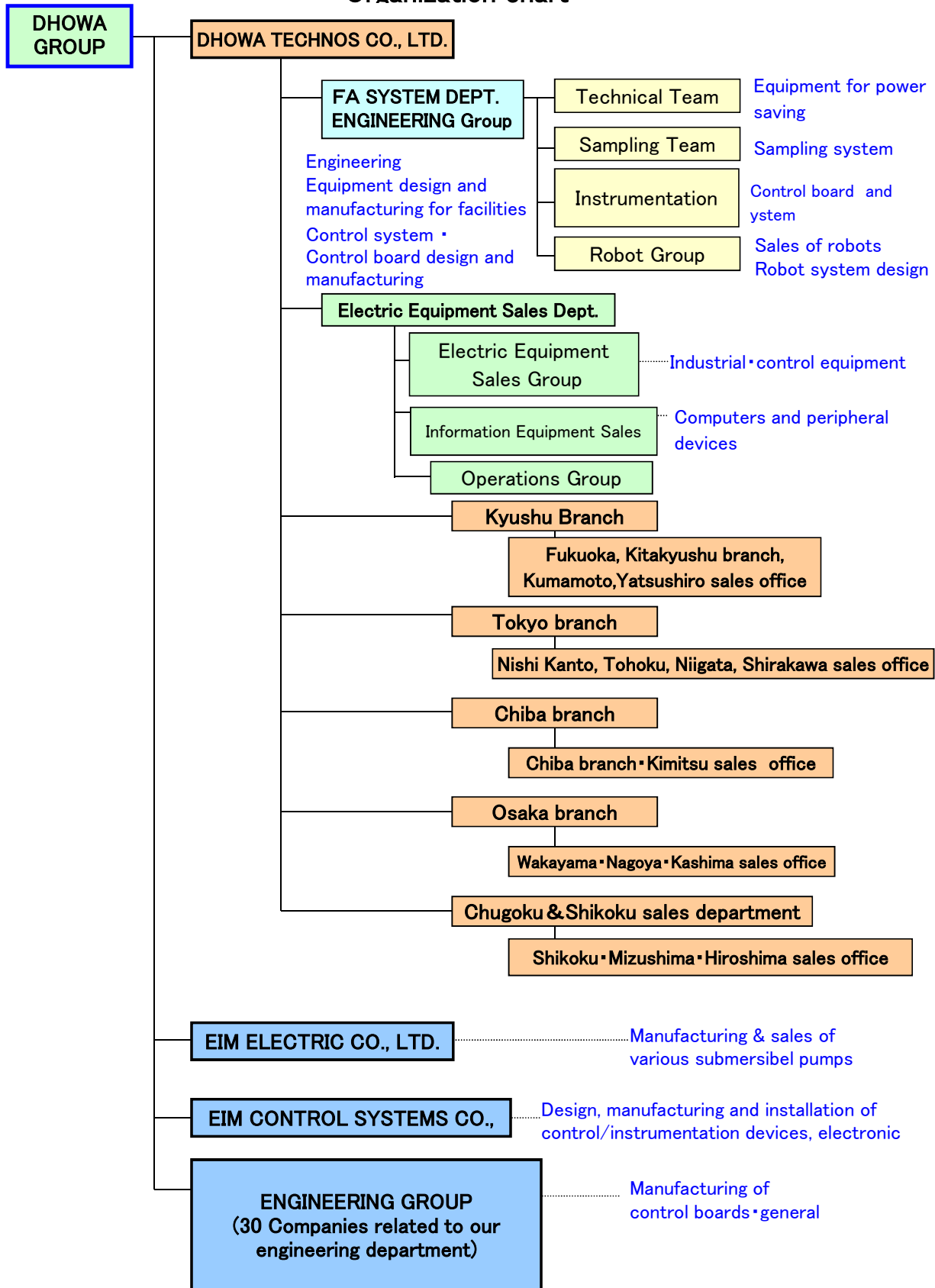
Kyushu branch (Fukuoka sales office, Kitakyushu sales office)
Public works dept.
Electric equipment sales dept.
Overseas sales dept.
Tokyo branch
Chiba branch
Osaka branch
Nishi Kanto sales office, Tohoku sales office
Niigata sales office, Kashima sales office
Shirakawa sales office, Nagoya Sales office
Kimitsu sales office, Wakayama sales office
Mizushima sales office, Shikoku sales office
Hiroshima sales office, Kumamoto sales office
Yatsushiro sales office

DHOWA TECHNOS Rus LLC
DHOWA TECHNOS(THAILAND) Co.,Ltd.

EIM ELECTRIC CO., LTD.
Overseas Department



Organization chart



DHOWA ・ EIM Group

2	Facility and equipment name	Model ・ Capacity	Name of manufacturer	Number of sales		Facility name
m a i n e q u i p m e n t	Test tank	Overall width 3000mm 1.8~237m ³ /min	Dhowa technos		1	Outdoor
	"	Overall width, Square, V-notch weir Width1200mm MAX 24 m ³ /min	"		2	Small and middle sized test room
	Electromagnetic flowmeter	3" 0~1.5m ³ /min	Yokogawa		1	"
	"	4" 0~2.0m ³ /min	"		1	"
	"	8" 0~10m ³ /min	"		1	Large-sized test room
	Transformer	3 ϕ , 500KVA \times P 210V S 400V	Ymambishi electric		1	"
	"	3 ϕ , 150KVA \times P 210V S 400V	Nishijima electric		1	Power receiving room
	Withstanding voltage tester	3KVA Model : RV-T MAX 3000V	Rissho electric		1	Small and middle sized test room
	"	2KVA Model : IPK-15 MAX 15000V	Musashi electric		1	Large-sized test room
	Leak tester	LS-1761BM	COSMO INSTRUMENT		1	Mobile type
	"	LSP-1200	"		1	"
	"	LS-1860N	"		1	"
	Large-sized test room	200V, 400V \times 300kW	Dhowa technos		1 set	Large-sized test room
	Small and middle sized test room	200V, 400V \times 37kW	"	1 each set		Small and middle sized test room
	Three phase induction motor	3.7kW, 5.5kW, 11kW	YASUKAWA CO. JP		1 each	" (200V)
	Frequency converter	3 ϕ , 50/60Hz, 55KVA, 220	YAWATA Electric Machinery Mfg.co., SAO Electric Corporation		1	Soundproof chamber
	Transformer	3 ϕ , 250KVA \times P 400V S 3000V			1	Large-sized test room
	"	3 ϕ , 400KVA \times P 400V S 3300V	DAIHEN Corporation.		1	"
	Electrical control valve	ϕ 200, ϕ 500, ϕ 1000	SUPERO SEIKI		1 each	"

DHOWA ▪ EIM Group

3	Name of facility and machine	Model ▪ Capacity	Manufacturer name		Unit	Facility name
	Automatic test	Interface board	Kokusai Keiso Co., Ltd.		1	Large-sized test room
	Computer system	Printer	NEC		1	"
		CRT (21inch)	"		1	"
	Inverter power supply	Maximum current 506A	YASKAWA		1	"
	Measuring instrument					

Main list of supply

Delivery destination	Housing production plant
Facility name	Automatic welding machine
Work details	<div>○Mechanical design・Manufacturing</div> <div>○Electrical design and manufacture</div> <div>○Installation</div> <div>○Engineering</div>



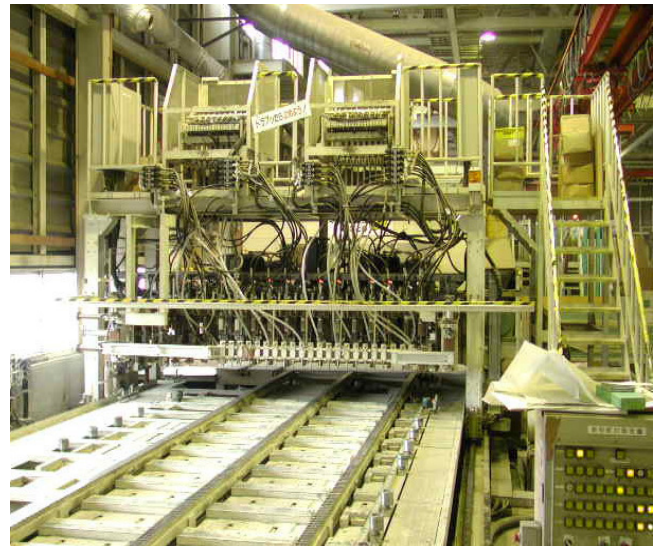
Delivery destination	Housing-allied enterprise facility
Facility name	Lumber supply machine
Work details	<div>○Mechanical design・Manufacturing</div> <div>○Electrical design and manufacturing</div> <div>○Installation work</div> <div>○Engineering work</div>



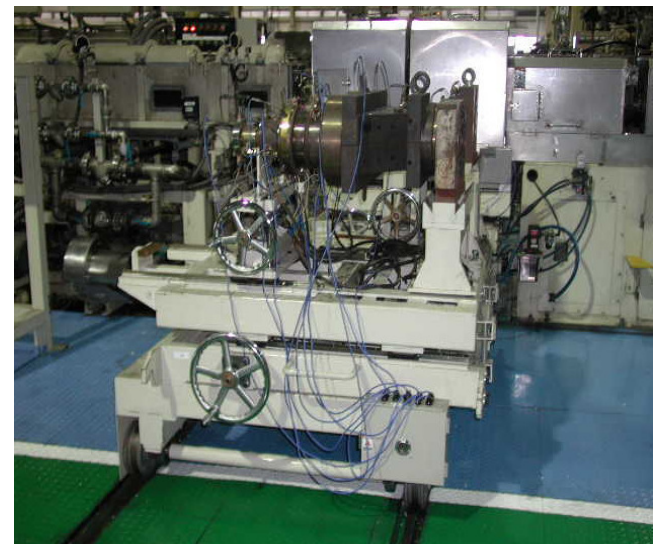
Delivery destination	Housing-allied enterprise facility
Facility name	Automated nailing machine
業務内容	<div>○Mechanical design・Manufacturing</div> <div>○Electrical design and manufacturing</div> <div>○Installation work</div> <div>○Engineering work</div>



Delivery destination	Housing-allied enterprise facility
Facility name	Automated exterior wall surface material nailing system
Work details	<input type="radio"/> Mechanical design and manufacturing <input type="radio"/> Electrical design and manufacturing <input type="radio"/> Installation work <input type="radio"/> Engineering work

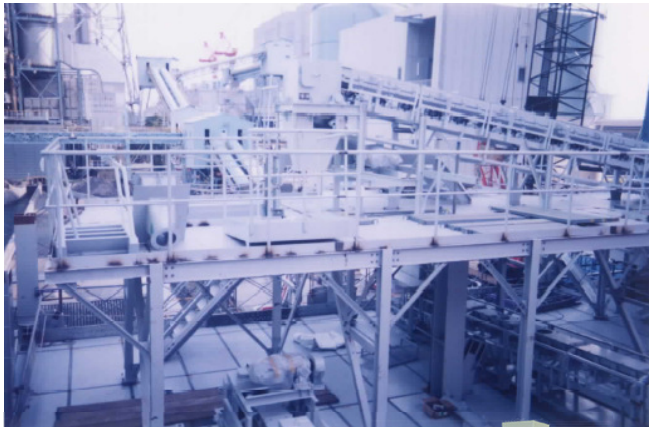


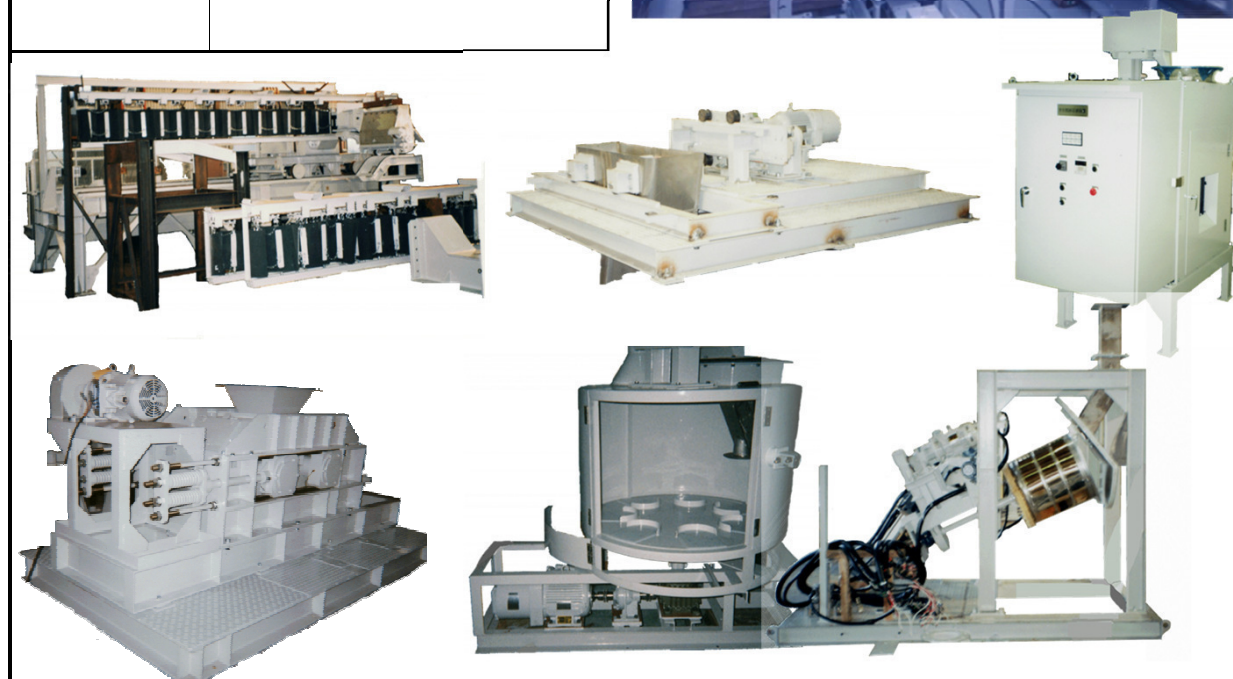
Delivery destination	Polyvinyl chloride pipe facility manufacturing facility
Facility name	Mold truck manufacturing
Work details	<input type="radio"/> Mechanical design and manufacturing <input type="radio"/> Electrical design and manufacturing <input type="radio"/> Installation work <input type="radio"/> Engineering work




Delivery destination	Steelworks in Kyushu district
Facility name	Rotary cone type divider
Work details	<input type="radio"/> Mechanical design and manufacture <input type="radio"/> Engineering

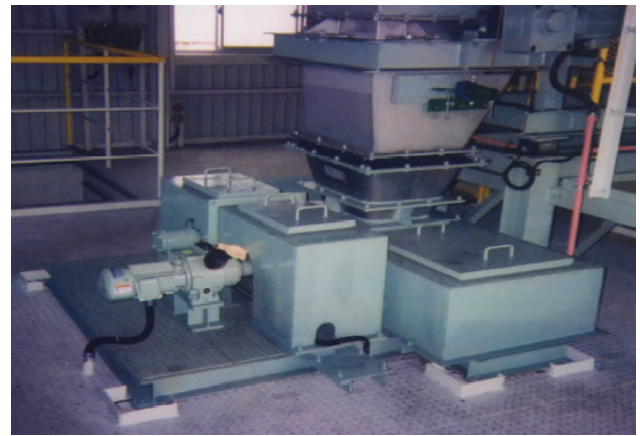
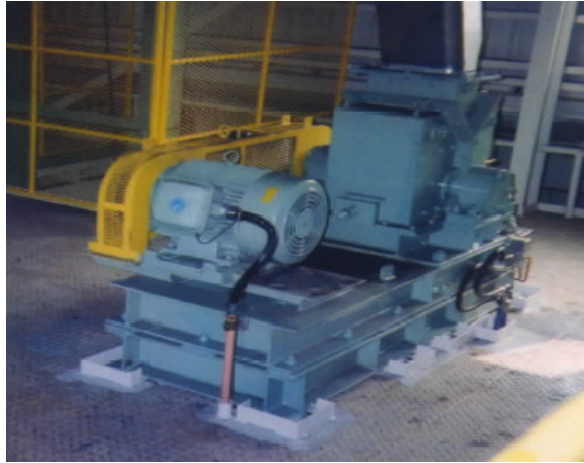


Delivery destination	Thermal power station	
Facility name	Coal receiving sampling system facility Coal discharge sampling system facility Sample processing facility (Coal)	
Work details	○Mechanical design and manufacturing ○Electrical design and manufacturing ○Engineering work	



Delivery destination	Polyvinyl chloride pipe manufacturing facility	
Facility name	Pelletizer manufacturing	
Work details	○Mechanical design・manufacturing ○Electrical design・Manufacturing ○Installation・modification of a software product ○Engineering work	

Delivery destination	Thermal power station
Facility name	IPP facility sampling system
Work details	<input type="radio"/> Mechanical design and manufacturing <input type="radio"/> Electrical design and manufacturing <input type="radio"/> Installation work <input type="radio"/> Engineering work



Delivery destination	Mold facility
Facility name	Molding for industrial product Automatic stacking machine
Work details	<input type="radio"/> Mechanical design and manufacturing <input type="radio"/> Electrical design and manufacturing <input type="radio"/> Installation work



Delivery destination	PVC pipe manufacturing facility
Facility name	Pipe packing・Transportation system
Work details	<ul style="list-style-type: none"> ○Mechanical design and manufacturing ○Electrical design and manufacturing ○Installation work ○Engineering work



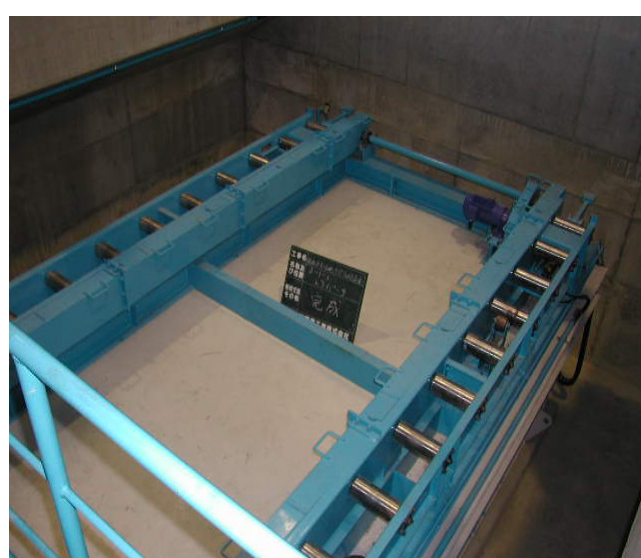
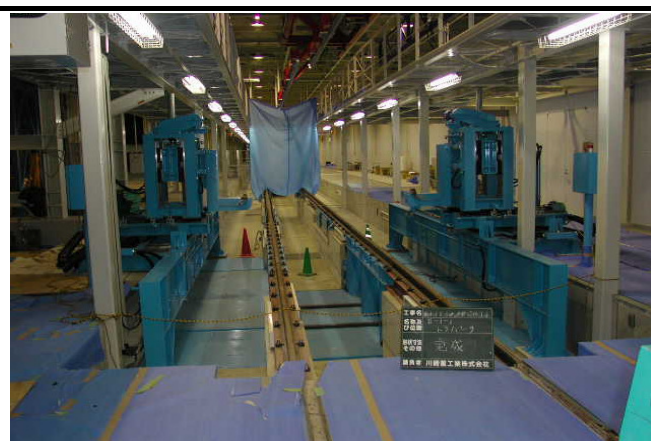
Delivery destination	Mould factory
Facility name	Pulp mould system Palletizing device
Work details	<ul style="list-style-type: none"> ○Mechanical design and manufacturing ○Electrical design and manufacturing ○Installation work ○Engineering work



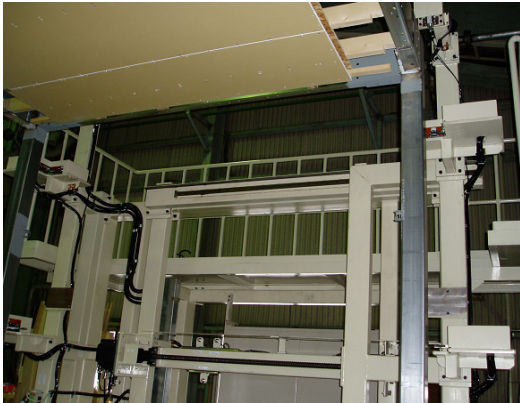
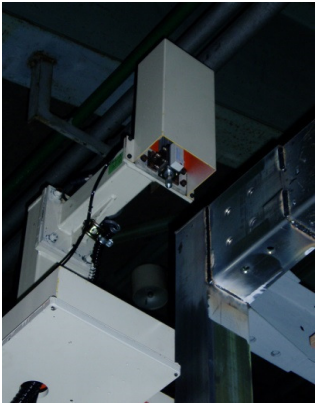
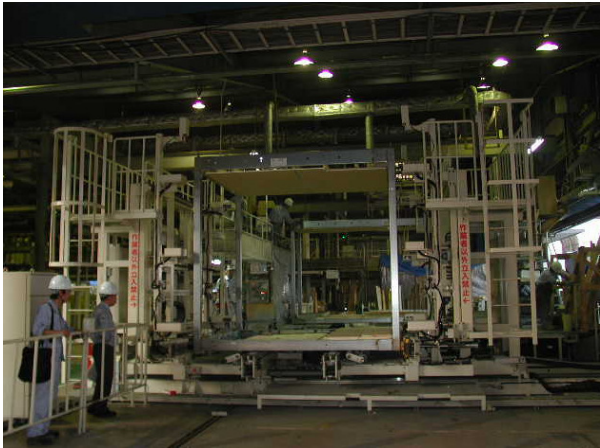
Delivery destination	PVC pipe manufacturing facility
Facility name	Expansion work of "Hi" material storage tank
Work details	<input type="radio"/> Mechanical design and manufacturing <input type="radio"/> Installation work



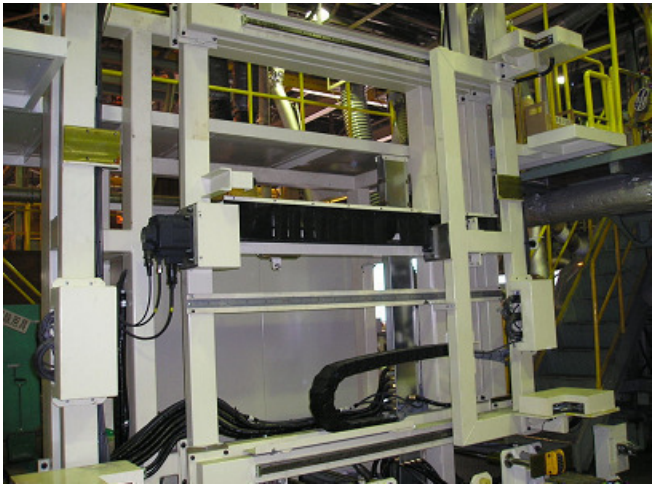
Deliv Delivery destina	Vehicle parts manufacturing facility
Facility name	II-1 Traverser
Work details	<input type="radio"/> Mechanical design and manufacturing <input type="radio"/> Electrical design and manufacturing <input type="radio"/> Installation work <input type="radio"/> Engineering work



Delivery destination	Housing-allied enterprise
Facility name	Measuring device
Work details	<input type="radio"/> Mechanical design and manufacturing <input type="radio"/> Electrical design and manufacturing <input type="radio"/> Installation work <input type="radio"/> Engineering work



Delivery destination	Housing-allied enterprise facility
Facility name	Measuring device
Work details	<input type="radio"/> Mechanical design and manufacturing <input type="radio"/> Electrical design and manufacturing <input type="radio"/> Installation work <input type="radio"/> Engineering work



Delivery destination	Thermal power station
Facility name	Drum cylindrical rotary dryer
Work details	<ul style="list-style-type: none"> ○Mechanical design and manufacturing ○Engineering work



Delivery destination	Chemical facility
Facility name	Auto-Packer No.3
Work details	<ul style="list-style-type: none"> ○Mechanical design and manufacturing ○Electrical design and manufacturing ○Engineering work



Delivery destination	Thermal power utility plant in Kyushu district
Facility name	Auto-packer for coal
Work details	<ul style="list-style-type: none"> ○Mechanical design・manufacturing ○Electrical design・Manufacturing ○Installation ・ modification of a software product ○Engineering work



Delivery destination	Polyvinyl chloride pipe manufacturing facility
Facility name	Joint process Palletizing apparatus
Work details	○Mechanical design and manufacturing ○Electrical design and manufacturing ○Installation work ○Engineering work



Delivery destination	Housing-allied enterprise facility
Facility name	Automated screw fastening machine for ciling board
Work details	<input type="radio"/> Mechanical design and manufacturing <input type="radio"/> Electrical design • Manufacturing <input type="radio"/> Installation work <input type="radio"/> Engineering work



Delivery destination	Housing-allied enterprise facility
Facility name	Automated thread fastening machine for floor board
Work details	<input type="radio"/> Mechanical design • Manufacturing <input type="radio"/> Electrical design and manufacturing <input type="radio"/> Installation work <input type="radio"/> Engineering work



Delivery destination	Thermal power station
Facility name	Repair work of the coal dehydrator to improve its performance
Work details	<ul style="list-style-type: none">○Mechanical design and manufacturing○Electrical design and manufacturing○Installation work○Engineering work



Main Delivery records

《Engineering facility》

Delivery destination	Facility name	Contents of works
SEKISUI CHEMICAL CO., LTD.	Automated blending facility	Engineering, A set of the system, Manufacturing, Installation
SEKISUI CHEMICAL CO., LTD.	Construction automation of supply device for face plates	Engineering, A set of the system, Manufacturing, Installation
SEKISUI CHEMICAL CO., LTD.	Panel transfer carriage	Engineering, A set of the system, Manufacturing, Installation
SEKISUI CHEMICAL CO., LTD.		Overhaul
TOTO LTD.	Raw materials sampling system facility	Engineering, A set of the system, Manufacturing, Installation
SEKISUI CHEMICAL CO., LTD.	Wall panel assembly line	Engineering, A set of the system, Manufacturing, Installation
SEKISUI CHEMICAL CO., LTD.	Ceiling board carrier & Glue application machine	Engineering, A set of the system, Manufacturing, Installation
SEKISUI CHEMICAL CO., LTD.	Automated nailing machine for floor beam	Engineering, A set of the system, Manufacturing, Installation
SEKISUI CHEMICAL CO., LTD.	Welding jig for house pillars facility	Engineering, A set of the system, Manufacturing, Installation
SEKISUI CHEMICAL CO., LTD.	Picking machine for all walls	Engineering, A set of the system, Manufacturing, Installation
SEKISUI CHEMICAL CO., LTD.	Pillar stocker facility	Engineering, A set of the system, Manufacturing, Installation
SEKISUI CHEMICAL CO., LTD.	Automated welding machine and applicator	Engineering, A set of the system, Manufacturing, Installation
SEKISUI CHEMICAL CO., LTD.	Panel automated nailing machine, Control board	Engineering, Electrical design, Manufacturing, Installation
SEKISUI CHEMICAL CO., LTD.	Pillar JP welding machine, Production management system	Engineering, Electrical design, Manufacturing, Installation
SEKISUI CHEMICAL CO., LTD.	Resin concrete quantitative analyzing equipment	Engineering, A set of the system, Manufacturing, Installation
SEKISUI CHEMICAL CO., LTD.	Lumber supply equipment, Jig	Engineering, A set of the system, Manufacturing, Installation
SEKISUI CHEMICAL CO., LTD.	Panel wall assembly machine	Engineering, Electrical design, Manufacturing, Installation
SEKISUI CHEMICAL CO., LTD.	Sash carrier facility	Engineering, A set of the system, Manufacturing, Installation
SEKISUI CHEMICAL CO., LTD.	Automated nailing machine	Engineering, A set of the system, Manufacturing, Installation
SEKISUI CHEMICAL CO., LTD.	Parts unloading machine, Grinding machine	Engineering, A set of the system, Manufacturing, Installation
SEKISUI CHEMICAL CO., LTD.	Line C/V Roadway surveillance and traffic system	Engineering, Electrical design, Manufacturing, Software modification
SEKISUI CHEMICAL CO., LTD.	Measurement screw C/V	Engineering, A set of the system, Manufacturing, Installation
SEKISUI CHEMICAL CO., LTD.	Front door carrier facility	Engineering, A set of the system, Manufacturing, Installation
SEKISUI CHEMICAL CO., LTD.	Beam ・JP welding machine	Engineering, A set of the system, Manufacturing, Installation
SEKISUI CHEMICAL CO., LTD.	Weighting line system relocation work	Engineering, Electrical design, Manufacturing, Installation
SEKISUI CHEMICAL CO., LTD.	Outer wall framework machine, buffer C/V,	Engineering, A set of the system, Manufacturing, Installation
SEKISUI CHEMICAL CO., LTD.	Face plate temporary fastening C/V	
SEKISUI CHEMICAL CO., LTD.	Multi spindle machine repair work	Engineering, A set of the system, Manufacturing, Installation
SEKISUI CHEMICAL CO., LTD.	Relocation work of the Chiyoda factory	Engineering, A set of the system, Manufacturing, Installation
SEKISUI CHEMICAL CO., LTD.	Assembly jig	Engineering, A set of the system ・Software modification
SEKISUI CHEMICAL CO., LTD.	Crane equipment	Engineering, Mechanical design・Manufacturing, Electrical design・Modification

Main delivery records

《Sampling system facilities》

Delivery year	Delivery destination	Facility name	Contents
1993	SAKATA KYODO POWER COMPANY.LTD	Coal convention Unit 2	Engineering, Mechanical design・Manufacturing
		Coal discharge sampling system	(The former Imamura technology)
1995	JFE Steel Corporation	Coal sampliylg system	Engineering, Mechanical design・Manufacturing
	Fukuyama works		(The former Imamura technology)
1998	Sumitomo Metal Industries, Ltd.	Coke sampling system	Engineering, Mechanical design・Manufacturing, SV Operation
	Kashima works	The grain size analysis	
1998	Sumitomo Metal Industries, Ltd.	Ore sampling system	Engineering, Mechanical design・Manufacturing, Installation
	Yawata Works Kokura Area		
1999	J-POWER	Sampling system	Operation, Unit of machine, SV Operation
	Isogo thermal power generation	Coal sample facility	
1999	Sumitomo Metal Industries, Ltd.	Rotary cone type divider	Mechanical design・Manufacturing
2001	KOBE STEEL, LTD.	IPP facility sampling sysmtem	Engineering, Unit of machine, Installation
2002	KANSAI COKE AND CHEMICALS COMPANY, LIMITED	Auto-Packer for coal	Engineering, Mechanical design・Manufacturing, Electrical design・Manufacturing
2002	Hitachinaka Thermal Power Station	Unloader control board	Engineering, Electrical design・Manufacturing
2002	Sumitomo Metal Industries, Ltd.	Divider S-600 Standard type	Mechanical design・Manufacturing
2003	Sumitomo Metal Industries, Ltd.	Divider S-600 Standard type	Mechanical design・Manufacturing
2003	Sumitomo Metal Industries, Ltd.	Divider S-600 Standard type Overhaul	Overhaul of the machine・Manufacturing
2004	Sakata Kyodo Power Company.Ltd.	Drum cylindrical rotary dryer	Engineering, Mechanical design・Manufacturing, Supervisor work
		Discharging A type auto packer	
2004	Mitsubishi Chemical Corporation	No.3 UC Auto packer	Engineering, Mechanical design・Manufacturing, Electrical design・Manufacturing
2005	J-POWER	Auto-packer for coal	Engineering, Mechanical design・Manufacturing, Electrical design・Manufacturing
	Matuura thermal power generation		
2005	STEAG State Power Inc.	Mindanao Coal-fired Power Plant	Engineering・Manufacturing
	T-NET JAPAN Co., Ltd.	Coal Sampling System	Sampling system・Control board design・Manufacturing
2007	Sakata Kyodo Power Company.Ltd.	Renewal work of the receiving hopper scale	Mechanical design・Manufacturing, Electrical design
2009	Sakata Kyodo Power Company.Ltd.	Renewal work of the discharging hopper scale	Mechanical design・Manufacturing, Electrical design
2009	J-POWER	Auto-Packer for coal	Engineering, Mechanical design・Manufacturing, Electrical design・Manufacturing
	Takehara thermal power generation	Renewal of sampling control board PLC	On site installation work, Trial run adjustment
2011	J-POWER	Coal discharge A type sampling system	Engineering, Mechanical design・Manufacturing, Electrical design・Manufacturing
	Matuura thermal power generation	Renewal work	On site installation work, Trial run adjustment
2012	J-POWER	Coal discharge B type sampling system	Engineering, Mechanical design・Manufacturing, Electrical design・Manufacturing
	Matuura thermal power generation	Renewal work	On site installation work, Trial run adjustment
2012	Tokyo Electric Power Company	Coal receiving sampling system	Engineering, Mechanical design・Manufacturing, Electrical design・Manufacturing
			On site installation work, Trial run adjustment
2014	J-POWER	Repair work of the coal dehydrator to improve its performance	Engineering, Mechanical design・Manufacturing, Electrical design・Manufacturing
	Matuura thermal power generation	Dehydrated cake discharge comveyor	On site installation work, Trial run adjustment

[illegible]

【Companies related to our engineering department】

Engineering department at Kyushu plant

- Facility for machinery manufacturing & assembly for general industrial equipment.
- Machining (machine work) for various types of equipment.
- Assembly test・Temporary general assembly tests, Combinational test adjustments.





DHOWA
TECHNOS

DHOWA TECHNOS CO., LTD.

3-5 Kurosaki Shiroishi, Yahata Nishi-ku, Kitakyushu-shi,
Fukuoka, 806-0004 Japan

TEL : +81-(0)93-621-4131 : +81-(0)93-621-4130

Website : <http://www.dhowa-technos.co.jp/en/?>
